

## MS-328-7



## MS-328-7

Normally Closed Reed Sensor

### Electrical Characteristics @ 25 °C

|                                 |        |                 |
|---------------------------------|--------|-----------------|
| Contact form                    |        | B               |
| Contact rating max.             | W / VA | 5               |
| Switching voltage max.          | VDC    | 175             |
|                                 | VAC    | 120             |
| Switching current max.          | A      | 0.25            |
| Carry current max.              | A      | 1.5             |
| Breakdown voltage min.          | VDC    | 200             |
| Total resistance max. (initial) | mΩ     | 200             |
| Insulation resistance min.      | Ω      | 10 <sup>9</sup> |

### Features

- Adjustable switching point
- Customized types available
- Various sensitivity ranges available
- Non pole oriented actuation

### Magnetical Characteristics (of unmodified Reed Switch) @ 25 °C

|                          |      |         |
|--------------------------|------|---------|
| Pull in range available  | AT   | 15 - 30 |
| Drop out min.            | AT   | 5       |
| Test coil                | TC   | 200     |
| Test equipment tolerance | ± AT | 2       |

### Approvals



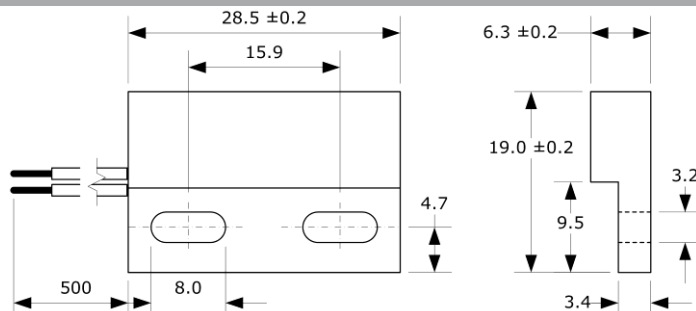
### Operating Characteristics (of unmodified Reed Switch) @ 25 °C

|                                  |    |      |
|----------------------------------|----|------|
| Switching frequency max.         | Hz | 100  |
| Resonant frequency typ.          | Hz | 1100 |
| Operate time max. (incl. bounce) | ms | 0.7  |
| Release time max.                | ms | 1    |

### Environmental Characteristics

|                        |    |            |
|------------------------|----|------------|
| Operating temperature  | °C | -20 to +85 |
| Vibration (50-2000 Hz) | g  | 30         |
| Shock (1/2 sin 11 ms)  | g  | 50         |

### Dimensions in mm



### Ordering Information

|                    |                 |
|--------------------|-----------------|
| Packing Unit       | 25 pcs          |
| Weight per piece   | 10.4 g          |
| Weight per package | 270 g           |
| Standard AT Ranges |                 |
|                    | 2 = 15 to 20 AT |
|                    | 3 = 20 to 25 AT |
|                    | 4 = 25 to 30 AT |

### Ordering Example

MS-328-7-2 describes MS-328-7 with 15 to 20 AT.

MS-328-7



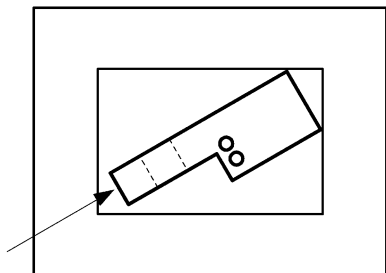
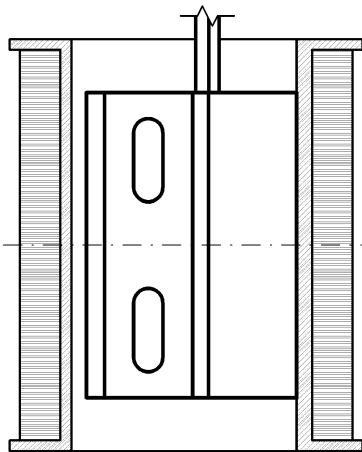
**MS-328-7**

Normally Closed Reed Sensor

**Material Information**

|                  | Material                                       | Colour |
|------------------|--|--------|
| Housing          | PA-GF  | black  |
| Cable            | UL 1007/1569, AWG 20, 4 mm stripped and tinned | black  |
| Potting compound | Epoxy  | black  |

**Test Procedure of final Reed Sensor**



Test Coil placed in vertical position

Reed Sensor centered in Test Coil

Reed Sensor pushed into opposite corner of Test Coil

**Test Parameters**

|               |              |
|---------------|--------------|
| Test coil     | TC-328       |
| Test programs |              |
| AT range      | Test program |
| 2 =           | MS-328-7-2   |
| 3 =           | MS-328-7-3   |
| 4 =           | MS-328-7-4   |

**Remarks**

When mounted onto ferromagnetic parts switching distance of MS-328-7 may reduce. Electromagnetical influences and magnetic fields may change the switching behaviour of the sensor.

Only non-ferromagnetic screws to be used for mounting.

Matching actuator MSM-328 available as well.

Product image serves as example only.